



# Motutere Recreation Reserve

## Reserve Management Plan 2024





# Contents

<b>Vision</b>	<b>3</b>
<b>Introduction</b>	<b>4</b>
<b>Purpose of a Recreation Reserve</b>	<b>5</b>
<b>Values</b>	<b>6</b>
<b>Objectives, Outcomes and Actions</b>	<b>7</b>
<b>Mana Whenua</b>	<b>9</b>
<b>Natural Environment</b>	<b>10</b>
<b>Public Access and Safety</b>	<b>12</b>
<b>Recreation Values</b>	<b>14</b>
<b>Built Infrastructure</b>	<b>16</b>
<b>Leases and Licences</b>	<b>18</b>
<b>Reserve Management Concept</b>	<b>21</b>
<b>Glossary</b>	<b>23</b>

This document is drafted in partnership between Taupō District Council and Ngāti Te Rangiitā ki Waitetoko hapū through the Motutere Recreation Reserve Management Plan Committee 2023.



# Vision

The mauri (life essence) of Motutere and its taonga (values) are protected and restored, the rights of mana whenua are recognised and provided for, and the recreation reserve continues to be a place for people to share and enjoy.

**“Ki te tiaki te tangata i te taiao, ka tiaki te taiao i te tangata.”**

If mankind takes care of his environment, the environment will take care of mankind.

*- The late Te Kanawa Pitiroi, Ngāti Te Rangīta kaumātua, historian and educator.*



# Introduction

The Motutere Recreation Reserve Management Plan 2024 has been developed in partnership between the Taupō District Council and Ngāti Te Rangiita ki Waitetoko hapū in recognition of Te Rangiita's historic cultural, social, and spiritual connection to the land. Taupō District Council, as the reserve's administering body, is committed to its Te Tiriti o Waitangi obligations<sup>1</sup> and acknowledges partnership with iwi and hapū as the basis of Te Tiriti. Strong strategic partnership requires mutual good faith, goodwill, and commitment to deliver outcomes that exceed what we can achieve alone.

- The area from Pākā (Hallets Bay) to Motuoapa, including Motutere, lies within the territorial boundaries of Ngāti Te Rangiita ki Waitetoko. At the heart of Ngāti Te Rangiita's connection to the land is the relationship with nature and the interconnection of the elements of nature and people. The area has cultural, historical, and environmental significance, with these elements woven together to create a holistic worldview of unity as one and the same. The **Context Summary** document accompanying this management plan contains more information on these values along with maps of the reserve.

Motutere Recreation Reserve is located in three distinctive reserve areas;

1. Motutere Main Reserve contains the main campground and wastewater treatment plant.
2. Motutere Bay lakeshore reserve contains the public boat ramp, swimmable bay, and lakeshore camping.

3. Ōtaiātoa Bay lakeshore reserve contains an open rocky shoreline.

The reserve has a unique place on the shores of Lake Taupōmoana. It has high scenic, natural, and recreational value, being situated in one of the few sheltered north-facing bays on the lake, making it a prime spot for lake activities. The reserve offers a unique opportunity for camping, with the Motutere Holiday Park being highly valued by visitors, and holding a special place in the hearts of regular campers.

The Reserve Management Plan (referred to herein as the plan, or this plan) is an outcomes-based document that recognises the values and the challenges of Motutere reserve. It places particular focus on environmental enhancement and education to enrich reserve enjoyment for all users. The plan provides a vision, key objectives, and outcomes for the day-to-day management and long-term environmental improvements in the reserve. In addition to this plan, the council's District Plan provides specific provisions for proposed developments within reserves and particular areas that require resource consent.

This plan is supported by two documents:

- The Motutere Recreation Reserve **Context Summary** document that outlines maps, the relevant key information considered in the development of this Plan, along with a glossary of terms.
- A Workplan (that will be developed on adoption of this plan) owned and managed by Council's Parks and Reserves Team – a living document that identifies who is responsible for the actions and timeframes for implementation.

<sup>1</sup> Administering bodies under the Reserves Act have a duty similar to the Crown to interpret and administer the Act to give effect to the principles of the Treaty of Waitangi. As this duty relates to the administration of the Act, all reserves managed under the Reserves Act are also subject to the obligation in section 4 of the Conservation Act.



# Purpose of a Recreation Reserve

## The purpose of a Recreation Reserve is:

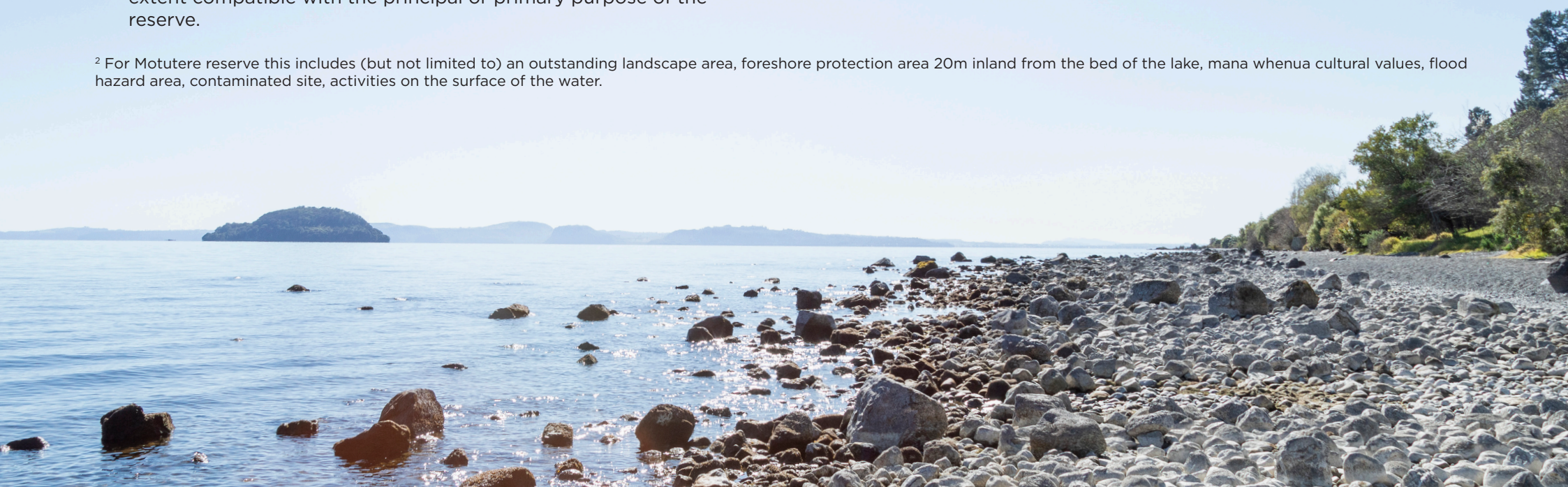
(Reserves Act S17) providing for recreation and sporting activities and the physical welfare and enjoyment of the public, and for the protection of the natural environment and beauty of the countryside with emphasis on the retention of open spaces and on outdoor recreational activities, including recreational tracks in the countryside.

## In addition, this classification requires the reserve to be administered to ensure that:

- The public shall have freedom of entry and access subject to any conditions and restrictions Council considers necessary.
- Where scenic, historic, archaeological, biological, geological, or other scientific features or indigenous flora or fauna or wildlife are present on the reserve, they are managed and protected to the extent compatible with the principal or primary purpose of the reserve.

- Those qualities of the reserve which contribute to the pleasantness, harmony, and cohesion of the natural environment and to the better use and enjoyment of the reserve are conserved.
- To the extent compatible with the principal or primary purpose of the reserve, its value as a soil, water, and forest conservation area are maintained.

<sup>2</sup> For Motutere reserve this includes (but not limited to) an outstanding landscape area, foreshore protection area 20m inland from the bed of the lake, mana whenua cultural values, flood hazard area, contaminated site, activities on the surface of the water.





# Values

There are many ways in which we value places. This plan considers the following values associated with:

- mana whenua spiritual and cultural values.
- natural environment and indigenous vegetation values.

- recreation values, including swimming, walking, picnicking, camping, boating.

The values are outlined in further detail within part two of this plan, it is important to note that these values are interconnected, and their interaction is key to how we value them.

## Manawhenua Values

Ngāti Te Rangiita ki Waitetoko’s key principles and values that reflect their intrinsic relationship with Motutere are; **Kawa, Tikanga, Whakapapa, Wairuatanga, Kaitiakitanga, Kotahitanga, Whanaungatanga, Manaakitanga, Utu.**

There are three key concepts central to Ngāti Te Rangiita’s principles and values:

- Mauri – life force,
- Tapu – sacredness, and
- Mana – authority or influence.

The [Context Summary](#) document explains these values and principles with examples of how they are applied to the management of Motutere Recreation Reserve.

## Natural environment values

The natural environment values include:

- The health and wellbeing of the natural environment – healthy ecosystems, native flora, and fauna – kowhai tree lined lakeshore reserves and abundant native bird life.
- High water clarity – recognising that what we do on the land relates to and affects the lake.
- High amenity values, openness, and natural character of the lake margin<sup>3</sup>, public access along the lake, recreation enjoyment for all.
- Natural environment predominates the upper hill slopes and surrounding headlands creating a natural green backdrop.

## Recreation values

The recreation values include:

- Swimmable sheltered accessible beach at Motutere Bay, access to services, access to boating and safe water play activities.
- Expansive open beach at Ōtaiātoa Bay, less developed, a more natural experience.
- Camping, outdoor nature experience, educational and tourism experiences, and appreciation of the natural environment.
- Proximity to the Motutere Scenic Reserve for bush walking, and connection to Te Poporo Bulli Point by boat.
- Part of the local community, sense of place and identity, close association of the bay and reserve with Motutere point community and recreational users.

<sup>3</sup> The Environment Court in *High Country Rosehip Orchards Ltd v Mackenzie DC [2011] NZEnvC 387*, at [140] stated: “Margins are likely to be areas beyond the wave action of a lake or extending away from the banks of a river for, depending on topography and other factors, at least 20-50 metres and sometimes more.”



# Objectives

The objectives of the management of Motutere Reserve are:

1. Mana whenua cultural values are respected, celebrated, and protected.
2. The reserve's unique natural environment values are restored and protected.
3. Public access and associated safety is maintained and enhanced for all reserve users.
4. A reserve that provides for the recreation values and meets a range of needs and enjoyment for all reserve users.
5. Built structures are sensitively designed to integrate with the natural environment values of the reserve.
6. Leases and licenses are provided for where they enhance Motutere's recreation values.

# Outcomes and Actions

The following outcomes and the Reserve Management Concept Plan inform the day-to-day management of the reserve. This section of the plan will assist with resource consent matters and will determine if proposed activities are meeting the objectives.

The actions outline how the objectives and outcomes are to be achieved. The actions listed are to be undertaken by the administering body of the reserve (currently Council), unless specifically stated otherwise. Actions

for physical works by Council are subject to Long-term Plan processes. This process will include developing detailed plans and quantity schedules to assist with cost estimates for funding applications.

The Work Plan (developed once the actions are adopted) includes the timing of each action, who is responsible for that action, and any monitoring requirements. The Work Plan will be regularly reviewed as part of the Annual Plan and Long-term Plan process.



## Mana Whenua

**The requirement to recognise and provide for the relationship of Māori and their culture and traditions with their ancestral lands, water, sites, wāhi tapu, and other taonga is a matter of national importance under the Resource Management Act and administering bodies under the Reserves Act have a duty to interpret and administer the Act to give effect to the principles of the Treaty of Waitangi.**

Ngāti Te Rangīiita ki Waitetoko hapū are mana whenua of Motutere and wider area from Pākā (Hallets Bay) to Motuoapa. The historical ties of Ngāti Te Rangīiita ki Waitetoko hapū to Motutere arise from their genealogical lineage to their esteemed ancestor Ngātoroirangi, who laid claim to the area. This legacy is strongly maintained today through their responsibilities as kaitiaki of Motutere and the surrounding area. Within this area are significant sites, names, and histories.

At the heart of the philosophy for Ngāti Te Rangīiita is treasuring their intrinsic relationship with the environment and the interconnectedness of the health and well-being of the environment and them as people. The three key concepts of Mauri, Tapu, and Mana have informed the development of this management plan. This is explained further in the Context Summary document on Ngāti Te Rangīiita Values.

Motutere Recreation Reserve and surrounds contain sites of cultural significance. The knowledge of these sites is sensitive, and their location must also be treated sensitively. For this reason, record of these sites is not shared within this plan, but rather held on file. Land use disturbance including earthworks, and vegetation removal and weed species are among the biggest threats to these sites. Continuing to work together in partnership with Ngāti Te Rangīiita ki Waitetoko and placing priority on appropriate management of sites of significance are key actions.



# Mana Whenua

## OBJECTIVE

1. Mana whenua cultural values are respected, celebrated, and protected.

## OUTCOMES

- 1.1 Ngāti Te Rangiita ki Waitetoko is partnered with to ensure cultural values are reflected, celebrated, and protected within the reserve and its ongoing management.
- 1.2 Sites of cultural significance are protected and managed appropriately in partnership with Ngāti Te Rangiita ki Waitetoko.
- 1.3 An increase in reserve users' awareness and understanding of Ngāti Te Rangiita ki Waitetoko cultural and historical values and relationship with Motutere Reserve.

## ACTIONS

### Mana Whenua Values

- 1.1.1 Council and Ngāti Te Rangiita ki Waitetoko will investigate how to work together on operational decisions for reserve management.
- 1.1.2 Enable and support initiatives for traditional cultural practices of Ngāti Te Rangiita ki Waitetoko, for example; Matariki celebrations.
- 1.1.3 Partner with Ngāti Te Rangiita ki Waitetoko to develop specific protocol and procedures including, but not limited to, instances of rāhui, and ceremonial blessings.

- 1.1.4 Partner with Ngāti Te Rangiita ki Waitetoko in the development of the Council's revegetation and restoration planting plans and guides for the reserve.

## Sites of Cultural Significance

- 1.2.1 Council and Ngāti Te Rangiita ki Waitetoko will work together to develop appropriate protection and management for culturally significant sites, including wāhi tapu.
- 1.2.2 Sites of cultural significance are recorded and shared within council's internal database, ensuring sensitive information is considered in council's works programmes and resource consent applications.

## Increased Awareness of Cultural Values

- 1.3.1 Use of correct Ngāti Te Rangiita ki Waitetoko place names in publications and name references including signage throughout the reserve.
- 1.3.2 Partner with Ngāti Te Rangiita ki Waitetoko to produce appropriate and innovative methods of information sharing on the cultural and historical values of Motutere, where there is a desire by hapū to share this information. Examples include; learning boards, signage, QR code interpretation information, and access to relevant publications.



# Natural Environment

**The preservation of natural character is a matter of national importance under the Resource Management Act, and a key purpose of the Reserves Act. A recreation reserve must seek the protection of the natural environment, with emphasis on the retention of open spaces and on outdoor recreational activities. The reserve must also be managed in a way that ensures those qualities of the reserve that contribute to the pleasantness, harmony, and cohesion of the natural environment are conserved.**

The natural environment consists of lake margins and surrounding native bush. The reserve contains areas of significant indigenous vegetation, outstanding landscapes, and the Foreshore Protection Area of the Taupō District Plan<sup>4</sup>; a 20m area of land on the lake margin; defined to help protect natural character values. The natural environment that attracts people to enjoy the reserves can be diminished by their use. Restoration and enhancement of the natural character and natural environment is a

key consideration of the management of the reserve.

Kaitiakitanga is an important principle for Ngāti Te Rangiiita ki Waitetoko. All people and organisations with an interest in Motutere Recreation Reserve have a role to play in protecting and enhancing the natural environment. The campground plays a key role in promoting the native wildlife areas and responsible dog management policy. Council works in partnership with environmental organisations through its Revegetation Plan and Guide to enhance and maintain natural values. These roles are integral to the health and well-being of the reserve, bolstered through partnership, and are expected to continue through actions in this plan.

This section also addresses management of wear and tear caused by reserve use, such as soil erosion and compaction from walking and vehicles. This is different to lake margin erosion from natural lake action.

<sup>4</sup> See full definition in the Taupō District Plan.



# Natural Environment

## OBJECTIVE

2. The reserve's unique natural environment values are restored and protected.

## OUTCOMES

- 2.1 A healthy natural environment with on-going protection and enhancement of indigenous vegetation.
- 2.2 Lakeshore reserves natural character is protected and restored to a high level of natural character and lined with abundant kowhai trees.
- 2.3 On-going management of soil erosion associated with reserve use.
- 2.4 An increase in reserve users' understanding, awareness and involvement of managing natural environment values.

## ACTIONS

### Health of the Environment

- 2.1.1 Protect the significant indigenous vegetation area in perpetuity (shown as the proposed vegetation protection area on the Reserve Management Concept Plan), allowing for walking tracks to be developed.
- 2.1.2 Campground Lessee to continue to support the management of environmental health at Motutere Bay. This includes (but not limited to) the campground continuing to promote the natural environment and its wellbeing, and supporting a pet policy that requires dogs to be on a leash.

### Protection and Restoration of Natural Character

2.2.1 Incorporate the lakeshore reserves for native revegetation planting and pest control within Council's Revegetation Planting Plan and Guide.

2.2.2 Establish a restoration planting plan for endemic low growing native plants and kowhai trees along the lakeshore reserves to enhance the natural character while considering requirement for views and Crime Prevention Through Environment Design (CPTED) techniques.

2.2.3 Council and Ngāti Te Rangiita ki Waitetoko will partner with groups such as Project Tongariro, Kids Greening Taupō, the campground and schools to undertake native revegetation.

## Soil Erosion Management

2.3.1 Limit pedestrian access to the lake through defined walkways using planting barriers in accordance with 2.2.2 at non-access points to stabilise soil erosion. Consider use of a reinforcing material to manage soil erosion in high use areas.

## Increased Awareness of Natural Environment Values

2.4.1 Investigate provision of appropriate signage and walking access tracks in native revegetation areas to enable increased enjoyment of natural environment areas by reserve users.

2.4.2 Council to include information signage to reserve users on the importance of the local natural environment to their experience and actively promote the restoration and protection of the natural environment.

## Public Access and Safety

**The maintenance and enhancement of public access to and along lakes is a matter of national importance under the Resource Management Act. A key purpose of the Reserves Act is the preservation of access for the public to and along lakeshores. The primary purpose of a recreation reserve is to provide a space for public enjoyment and recreation.**

Motutere Bay campground restricts public access to the lakeshore reserve and the campground lease has impacted access to the public boat ramp. This has hindered the council's ability to provide adequate

boat trailer parking facilities, causing safety and access issues. The current vehicle access to Ōtaiātoa Bay lakeshore reserve lacks a turning bay, making it difficult and unsafe to access.

Where there is public access enabled for recreation purposes, council has a duty to provide appropriate reserve facilities to accommodate that use. There is also a duty to ensure access is as safe as possible and risks are appropriately managed.



# Public Access and Safety

## OBJECTIVE

3. Public access and associated safety is maintained and enhanced.

## OUTCOMES

3.1 Pedestrian public access is provided to the lakeshore reserves.

3.2 Public vehicle access and parking is provided for lakeshore reserves in accordance with the Reserve Management Concept Plan.

3.3 Vehicle and boat trailer parking for campers continues to be provided at the campground as part of the lease.

3.4 Safety risks associated with public access to the lakeshore reserves; particularly State Highway 1 crossings are appropriately managed.

## ACTIONS

### Defined Public Access

3.1.1 Establish dedicated pedestrian access points to the lake within the public use area. (see also actions on soil erosion management under Objective 2 **Natural Values**).

3.1.2 Provide distinctive and welcoming entrances to the recreation reserve areas, designed in partnership with Ngāti Te Rangiita ki Waitetoko.

3.1.3 Council will partner with Ngāti Te Rangiita ki Waitetoko to ensure public access to sites of cultural significance are managed appropriately (see also actions on sites of cultural significance).

### Public Access to Vehicle and Boat Trailer Parking

3.2.1 Minimise vehicle access to Motutere and Ōtaiātoa Bay lakeshore reserves from State Highway 1 to one vehicle access point for each reserve.

3.2.2 Provide car parking space for public day use at Motutere and Ōtaiātoa Bay lakeshore reserves.

3.2.3 Prevent vehicle access at night within the public day use areas using vehicle restrictors (e.g. bollards and lockable gates). Design vehicle restrictors to integrate with the natural colours and tones of the reserve, while allowing for inclusion of safety reflectivity and visibility.

3.2.4 Hard surfacing for public parking areas to be designed with integrated vegetation planting to visually break up hard surfaces and enhance natural character values. (See also actions on protection and restoration of natural character under Objective 2 **Natural Values**).

### Campground Vehicle and Boat Trailer Parking

3.3.1 Ensure adequate car and boat trailer parking for campground users continues to be provided for within campground lease areas (see also actions on Leases and Licences).

3.3.2 Campground operator to inform campground users to use parking provided for within the campground.

### Safety

3.4.1 Council to apply to NZ Transport Agency Waka Kotahi to install a safe pedestrian refuge crossing from the campground to Motutere Bay lakeshore reserve.

3.4.2 Council to advocate to NZ Transport Agency Waka Kotahi to undertake a safety audit and maintain a lower speed limit of State Highway 1 at Motutere Bay.

3.4.3 Pedestrian access points to and along the lake are separated from vehicle access and positioned to avoid conflict with boat ramp users.

3.4.4 Identify and appropriately manage public safety hazards including (but not limited to): highlighting a hazard with signage, lighting, and barriers to discourage access.

# Recreation

**Motutere Recreation Reserve is highly valued for a range of recreation activities. It is a diverse reserve providing a range of recreation experiences from the swimmable sheltered bay at Motutere Bay, open rocky beach at Ōtaiātoa Bay, natural bush areas, and camping. The reserve is part of the local community, sense of place and identity for those who enjoy the reserve.**

Motutere Campground is a valued destination for generations of campers enjoying the natural setting of Motutere Bay. Camping at Motutere Recreation Reserve will continue to be provided for through the campground lease. The current campground lease at the time of adopting this management plan commenced in 2005 and is referred to in this plan as the 2005 lease. This lease expires in 2038. The campground provides the opportunity for reserve users to stay overnight at Motutere Recreation Reserve in proximity to the lakeshore reserves. This needs

to be balanced with the need to provide for all reserve users wishing to enjoy the lakeshore reserves.

To achieve a better balance the Motutere Bay lakeshore reserve will transition from being exclusively for camping to include a public day use area. This transition will provide for a lakeshore reserve that achieves the vision of a recreation reserve for all to enjoy.

Ōtaiātoa Bay lakeshore reserve has challenges including the lack of reticulated services, illegal camping, and antisocial behaviour. There is a need to provide for facilities that service recreation use, but those facilities have the potential to diminish the very values that attract people to the reserve if not designed appropriately. There is a need to manage these conflicting uses and ensure recreation values can continue to be enjoyed by all.



# Recreation

## OBJECTIVE

4. A reserve that provides for the recreation values and meets a range of needs and enjoyment for all reserve users.

## OUTCOMES

- 4.1 A reserve that balances the diverse recreation needs of all users.
- 4.2 Formal camping is provided for at Motutere Recreation Reserve through a campground lease, with freedom camping not permitted.
- 4.3 Motutere Bay lakeshore reserve west of the boat ramp will transition to public day use area, and the campground lease area east of the boat ramp will be used for tenting only.
- 4.4 Recreation facilities are consolidated, and levels of service are appropriate to the values of the reserve.
- 4.5 Responsible management of dogs within the reserve by their owners.

## ACTIONS

### Diverse Recreation needs

- 4.1.1 Provide signage to show locations of publicly accessible areas.
- 4.1.2 Maintain walking and cycling tracks along the Ōtaiātoa Bay lakeshore.

### Camping

(see also staging and timing actions in Objective 6 [Leases and Licences](#)).

4.2.1 Under any new lease arrangement the location of the formal camping area will be as shown within the Reserve Management Concept Plan subject to lease conditions. This change includes establishment of a public use area to the west of the boat ramp and tent camping to the east of the boat ramp.

4.2.2 Install signage to reinforce freedom camping is not permitted.

## Recreation Facilities and Levels of Service

- 4.3.1 Consider the natural environment and cultural values when designing facilities.
- 4.3.2 Public day use facilities at Motutere Bay lakeshore reserve will include car and boat trailer parking to service the boat ramp, a toilet at existing reticulation, rubbish bins, dog bags, signage, water fountain, BBQ, furniture, water play activities.
- 4.3.3 Apply to Department of Internal Affairs (harbour master), Tūwharetoa Māori Trust Board, and Taupō-nui-a-Tia Management Board for a safe swim zone and jumping platform to the west of the boat ramp jetty.
- 4.3.4 Discourage illegal camping and rubbish dumping at Ōtaiātoa Bay lakeshore reserve by reducing the area of vehicle access as shown on the Reserve Management Concept Plan to a smaller open car parking area. Install signage asking visitors to take their rubbish with them.

## Dog Management

- 4.4.1 Dog owners to ensure their dog/s are kept on a leash at all times.
- 4.4.2 Investigate including Ōtaiātoa Bay lakeshore reserve as a dog exercise area.
- 4.4.3 Council to provide signs informing dog owners of the rules and their responsibilities.

## Built Infrastructure

**The overall reserve surrounding the campground is characterised by open space character. The campground area is characterised by built development of clustered low-density small structures, caravans, and vehicles.**

Currently there are structures within the lakeshore reserve. The lakeshore reserves include the Foreshore Protection Area of the Taupō District

Plan; a 20m area of land on the lake margin; defined to help protect natural character values.

This section addresses built structures within the reserve. It seeks to consolidate built infrastructure to defined locations, and ensure they are designed to integrate with the natural environment.



# Built Infrastructure

## OBJECTIVE

5. Built structures are sensitively designed to integrate with the natural environment values of the reserve.

## OUTCOMES

5.1 Built structures and infrastructure are designed to complement and respect the natural environment values of the reserve.

5.2 The Foreshore Protection Area is free of built structures that do not have a functional requirement for that location.

5.3 The level of built development in the reserve is consistent with the recreation use zones in the Reserve Management Concept Plan.

5.4 Council water and wastewater infrastructure operations are consolidated allowing for reclassification to Local Purpose reserve if needed.

## ACTIONS

### Sensitive Design

5.1.1 Structures on the lakeshore reserves to use materials and colours to respond to the hues of the natural environment, and minimisation of reflectivity levels. This involves using natural materials or paint using colours generally within the A and B Groups of the British Standard BS 5252 colour chart with reflectivity level less than 35%.

5.1.2 For the purpose of this management plan, the definition of structures is the same as the Taupō District Plan, and in addition it also includes fences, walls, retaining walls and decks.

## Foreshore Protection Area

5.2.1 New built structures are to be located outside of the Foreshore Protection Area unless that structure has a functional requirement to be located there. Examples of structures that have a functional requirement include erosion works structures, water pump house, water treatment building.

5.2.2 The removal of existing built structures out of the Foreshore Protection Area that do not rely on the location for their purpose.

5.2.3 Essential facilities such as toilets can be located on the lakeshore reserve, so long as they are outside of the Foreshore Protection Area and located within the existing services reticulation alignment.

## Council Infrastructure

5.3.1 The ability for Council to provide for built infrastructure associated with community wastewater and water services is enabled, while ensuring sites of cultural significance are protected.

5.3.2 Built infrastructure associated with council services is consolidated and minimised to areas of the reserve where they are functionally required to be located.

5.3.3 Allow for reclassification of the consolidated infrastructure area as Local Purpose if required. For the wastewater treatment plant this is the zone shown in the Reserve Management Concept Plan.

## Leases and Licences

**Leases and licences on recreation reserves are to provide for the purpose of the reserve. This includes physical welfare and enjoyment of the public, protection of the natural environment, and retention of open spaces and outdoor recreational activities.**

The Motutere Campground lease has provided a much-loved lakeside camping experience for generations of campers at Motutere Bay and camping will continue to be provided for. There is a need to consider sites that are suitable for camping. To date, camping on the lakeshore reserve has limited the ability to provide for public access to Motutere Bay. This has created challenges around providing for recreation facilities at the public boat ramp for the local community and visitors. To meet

the reserve's objectives on natural character, public access and safety, and recreation values, the level of camping on Motutere Bay lakeshore reserve will be reduced to enable a dedicated public reserve.

Adjacent to the existing campground are two new potential campground areas, one for camping and the other for outdoor recreation. The proposed campground areas are subject to conditions for their use, due to the presence of cultural sites of significance, ecological values, and the proximity of the closed landfill contaminated site.

Changes in campground lease areas will need to be managed in a staged approach to enable time for redundant structures to be removed and the reserve reinstated.

# Leases and Licences

## OBJECTIVE

6. Leases and licences are provided for where they support Motutere's recreation values.

## OUTCOMES

6.1 Leases and licences are appropriate for and give effect to the purpose of a recreation reserve.

6.2 New campground leases are aligned with the objectives of this management plan.

6.3 Proposed campground areas are developed in accordance with outlined conditions.

6.4 A staged approach is allowed for changes and timing in new campground leases.

## ACTIONS

(Note: This section to be read with reference to the Reserve Management Concept Plan).

### Appropriate Leases and Licences

6.1.1 Ensure variations to existing leases, new leases and licences at Motutere Recreation Reserve meet the vision, objectives, and outcomes of this reserve management plan.

### Campground Lease

6.2.1 At expiry or surrender of the 2005 campground lease, or at the commencement of a new lease; that area shown on the concept plan of Motutere Bay lakeshore reserve west of the boat ramp will transition to a day-use public reserve and will be removed from the campground lease once the transition is complete.

6.2.2 Car parking and boat trailer parking spaces for campers to continue to be provided by the Lessee within the campground lease area. Car parking within public day use areas will be for public day use only.

### Proposed Campground Area 1

6.3.1 The campground lease area may be extended into proposed campground area 1 – as shown in the Reserve Management Concept Plan, subject to the following conditions:

- a. Removal of camping from the Motutere Bay lakeshore reserve shown as day-use public reserve in the Reserve Management Concept Plan.
- b. A suitably qualified ecologist assessment of the amount of biodiversity offset planting required and additional information gathered on fauna, specifically lizards and long-tail bats. To be funded by the Lessee.
- c. Lessee to undertake biodiversity offset planting for vegetation removal with a ratio as recommended within the ecological assessment. (This will depend on the amount of indigenous vegetation clearance proposed and the ratio will depend on the timing of the offset planting; for a ratio of 4:1; replace 4 hectares of indigenous vegetation for every 1 hectare of removal. If replacement planting is undertaken at least 5 years in advance of clearance, a 1:1 ratio may be sufficient). To be funded by the Lessee.
- d. The indigenous vegetation for biodiversity offset planting in the main Motutere Reserve includes: whauwhaupaku/five finger *Pseudopanax arboreus*, kōhūhū/black matipo *Pittosporum tenuifolium*, mahoe/whiteywood *Melicytus ramiflorus*, kānuka *Kunzea ericoides*, hangehange *Geniostoma ligustrifolium*, and karamū *Coprosma robusta / lucida*. The indigenous vegetation for biodiversity offset planting on the lakeshore reserves will be predominantly kōwhai *Sophora tetraptera*, along with the above species.
- e. An assessment of effects report assessing cultural effects by a Ngāti Te Rangiita approved cultural advisor assessing the potential impact of proposed land disturbance on sites of cultural significance



## Leases and Licences (cont.)

and recommended management approach for the proposed land disturbance. To be funded by the Lessee.

- f. Implementation of approved earthworks within or near waahi tapu must have an accidental discovery protocol in place.
- g. Maintain a minimum 20m external boundary setback from adjacent forestry operations and 40m external boundary setback from the adjacent Scenic Reserve. The setbacks are to ensure safety and effects of nuisance are managed with adjacent forestry operations, and to ensure a sufficient vegetation buffer for the adjacent scenic reserve.
- h. Lessee will be responsible for establishing additional connections to water and wastewater services and associated costs, working with Council's asset managers.
- i. The Lessee to develop and implement a pest management strategy for the indigenous vegetation biodiversity offset planting areas.

### Proposed Campground Area 2

6.4.1 The campground lease area may be extended into proposed campground area 2 - as shown in the Reserve Management Concept Plan; subject to the following conditions:

- a. If developed, proposed campground area 2 is to be a recreation only zone with no tourist accommodation.
- b. An assessment of effects report assessing cultural effects by a Ngāti Te Rangīta approved cultural advisor assessing the potential impact of proposed land disturbance on sites of cultural significance and recommended management approach for the proposed land disturbance. To be funded by the Lessee.
- c. A Hazardous Activities and Industries List assessment and any recommendations of that report for the use proposed. To be funded by the Lessee.

### Staging and Timing

6.5.1 Within 12 months of commencement of a new lease for the campground the lessee is to remove all buildings and structures from proposed Area A (as shown on the Reserve Management Concept Plan). The lessee is to repair and make good at its own expense any damage caused by the removal and must leave the land in a clean and tidy condition.

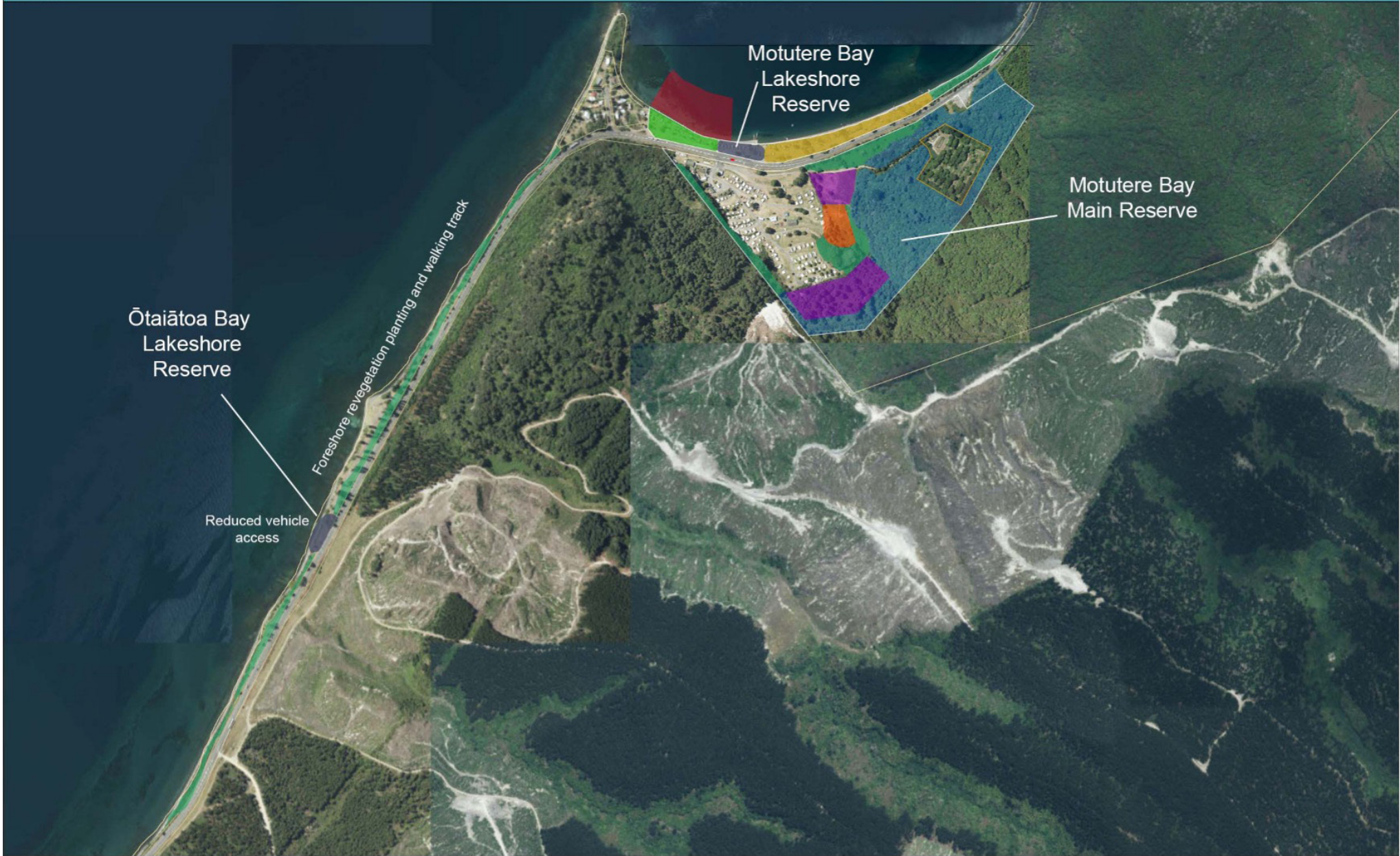
6.5.2 The enhancement of the public day use area to the west of the boat ramp will require Council funding to be considered as part of the Long-term Plan and Annual Plan processes.

6.5.3 Timing of actions will be dependent on the 2005 Lease being upheld until its expiry in 2038, or with agreement of the Lessee - commencement of a new lease prior to that date.

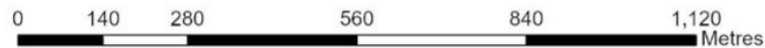
6.5.4 Should the 2005 lease continue without variation or surrender the lakeshore part of the reserve will remain as it is until 2038.



# Motutere Recreation Reserve DRAFT CONCEPT PLAN OVERVIEW

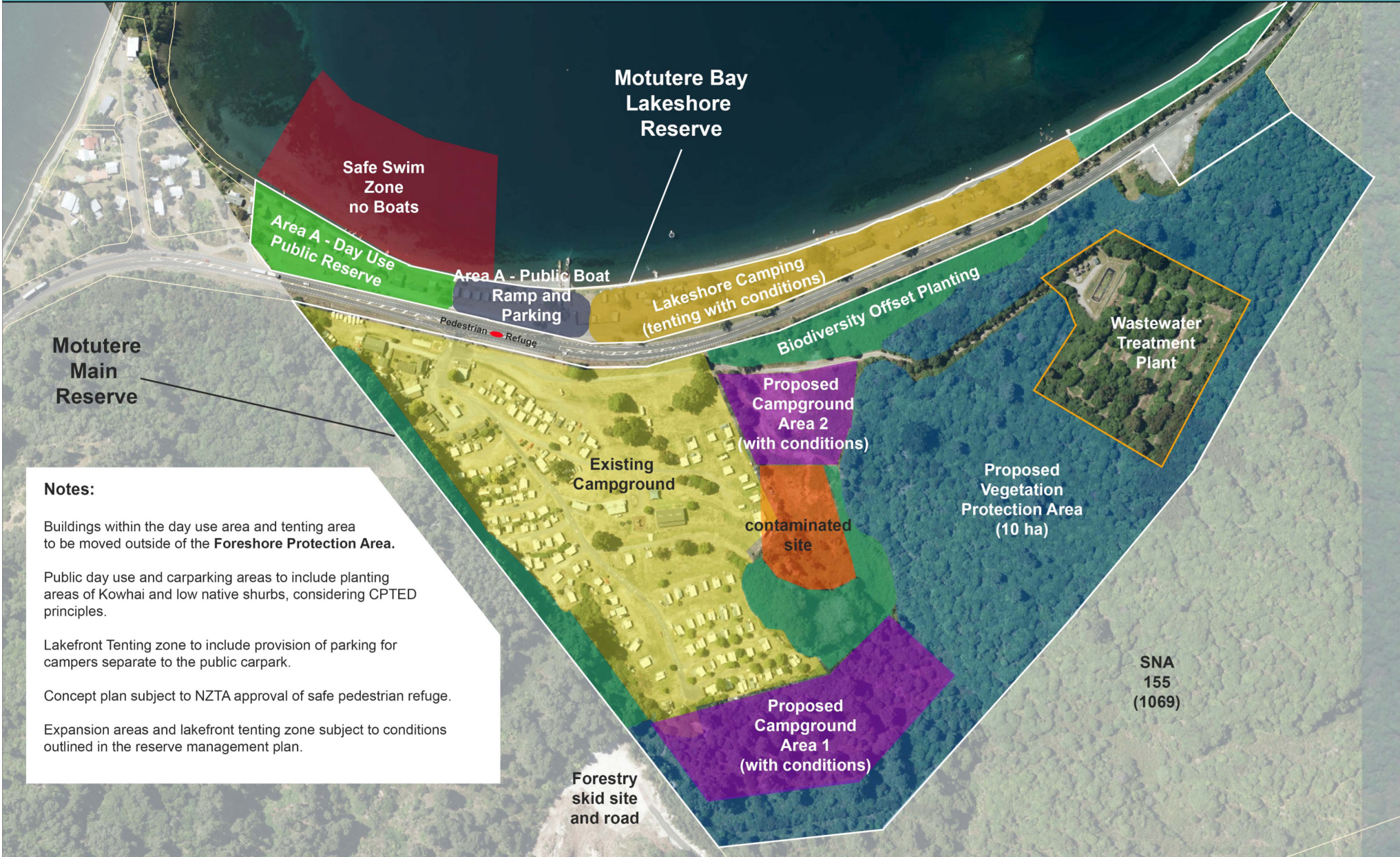


The information displayed has been taken from Taupo District Council's GIS databases and maps. It is made available in good faith, but its accuracy or completeness is not guaranteed. Position of property boundaries are INDICATIVE only and must not be used for legal purposes. Cadastral information sourced from Land Information New Zealand. Crown Copyright Reserved. This map is not to be reproduced without permission of TDC. © Copyright Reserved Taupo District Council.





**Motutere** PROPOSED Reserve Management Concept Plan - ZONE AREAS



**Notes:**

Buildings within the day use area and tenting area to be moved outside of the **Foreshore Protection Area**.

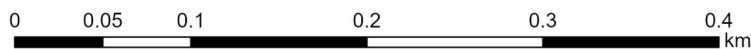
Public day use and carparking areas to include planting areas of Kowhai and low native shrubs, considering CPTED principles.

Lakefront Tenting zone to include provision of parking for campers separate to the public carpark.

Concept plan subject to NZTA approval of safe pedestrian refuge.

Expansion areas and lakefront tenting zone subject to conditions outlined in the reserve management plan.

The information displayed has been taken from Taupo District Council's GIS databases and maps. It is made available in good faith, but its accuracy or completeness is not guaranteed. Position of property boundaries are INDICATIVE only and must not be used for legal purposes. Cadastral information sourced from Land Information New Zealand. Crown Copyright Reserved. This map is not to be reproduced without permission of TDC. © Copyright Reserved Taupo District Council.





# Glossary

<b>Amenity</b>	The Resource Management Act defines amenity as “...those natural or physical qualities and characteristics of an area that contribute to people’s appreciation of its pleasantness, aesthetic coherence, and cultural and recreational attributes.”	<b>Mahi</b>	Work, vocation
<b>Concept Plan</b>	Shows any physical and administrative changes planned for the reserve.	<b>Mahi toi</b>	Art, craft
<b>Foreshore Protection Area</b>	As defined in the Taupō District Plan	<b>Mana</b>	Authority or influence
<b>Hapū</b>	Sub section of large kinship group (iwi) descended from a common ancestor.	<b>Mana whenua</b>	Indigenous people, born of the whenua, people of the land that hold authority over a particular area through whakapapa (their ancestral connection to the whenua). In the context of this document mana whenua is Ngāti Te Rangiita ki Waitetoko hapū.
<b>Iwi</b>	Large kinship group of people descended from a common ancestor and connected through whakapapa to a distinct area.	<b>Manaakitanga</b>	Hospitality, kindness, and care for others.
<b>Kaimahi</b>	Staff, worker	<b>Māori</b>	A member of the indigenous people of Aotearoa New Zealand
<b>Kaitiaki</b>	A guardian or trustee	<b>Matariki</b>	A large cluster of stars
<b>Kaitiakitanga</b>	Guardianship of land and resources.	<b>Mauri</b>	Life force
<b>Kaupapa Kaitiaki Plan</b>	Plan to protect and improve the health and wellbeing of the Taupō catchment	<b>Mauri tū</b>	Environmental health is protected, maintained, and / or enhanced.
<b>Kawa</b>	Sanctified procedures only applicable to change under specific measures	<b>Mātauranga</b>	Knowledge
<b>Kōrero</b>	Conversation	<b>Ngā Aho</b>	Māori designer and planners
<b>Kotahitanga</b>	Unity and solidarity	<b>Outstanding Landscape Area</b>	As defined in the Taupō District Plan
<b>Lease</b>	A grant of an interest in land that gives exclusive possession of the land and makes provision for any activity on the land that the lessee is permitted to carry out.	<b>Pā</b>	Fortified village
<b>(2005 Lease)</b>	The campground lease that was in place at the time of reviewing the reserve management plan.	<b>Rahui</b>	To put in place a temporary ritual prohibition,
<b>License</b>	A grant of non-exclusive interest in land that makes provision for any activity on the land that the licensee is permitted to carry out.	<b>Rohe</b>	Territory or boundaries of tribes
		<b>Rua</b>	Storage hole, pit, burrow
		<b>Taonga</b>	A highly treasured object
		<b>Tapu</b>	Sacred, spiritual restrictions
		<b>Te Ao Māori</b>	Māori world view
		<b>Te Aranga Principles</b>	A cultural landscape strategy/approach to design thinking and making which incorporates a series of Māori cultural values and principles

## Glossary (cont.)

<b>Te matawhānui</b>	Vision
<b>Te Taiao</b>	Natural environment
<b>Te Tiriti o Waitangi</b>	The Te Reo Māori version of the Treaty of Waitangi
<b>Tikanga</b>	Customs, protocols, and behaviour guidance.
<b>Tino rangatiratanga</b>	Self determination
<b>Tohu</b>	Sites of significance to iwi and hapu where cultural landmarks are acknowledged and protected
<b>Urupa</b>	Burial ground
<b>Utu</b>	Maintaining balance through reciprocity
<b>Wāhi tapu</b>	Sacred place, sacred site
<b>Wairuatanga</b>	Spirituality and understanding of spiritual dimensions
<b>Waka Kotahi</b>	New Zealand Transport Agency
<b>Whakapapa</b>	Ancestral connections defining identity and place
<b>Whanaungatanga</b>	Relationships and belonging
<b>Whenua</b>	Land





**GREAT LAKE TAUPŌ**  
Taupō District Council

**Motutere Recreation Reserve**  
Reserve Management Plan 2024